

10 art on the ATLANTA BELTLINE year anniversary 2019 2020 EXHIBITION

EXPERIENCE
PUBLIC ART
THAT IS AS
TRANSFORMATIVE
AS ATLANTA.

In its tenth year, *Art on the Atlanta BeltLine* brings hundreds of new and returning artists to celebrate the culture of Atlanta along seven miles of the Atlanta BeltLine corridor.



SPONSORS

PRESENTING



Georgia Natural Gas



NORTHSIDE HOSPITAL



PONCE CITY MARKET

GOLD



SILVER



BRONZE



MailChimp
Uber

WARNERMEDIA

GOVERNMENT



NATIONAL
ENDOWMENT
for the
ARTS
arts.gov

FULTON COUNTY
ARTS & CULTURE

FUNDRAISING



Atlanta
BeltLine
Partnership

PATRON

Inman Park Neighborhood Association
Flashpoint Artists Initiative
Michael Ross | Atlanta Fine Homes Sotheby's

AOAB HISTORY



2010-2012

The first years of *Art on the Atlanta BeltLine* took place before any of the Atlanta BeltLine trails were paved. The original concept was to draw people into the corridor to experience the art, while also revealing the magic of the Atlanta BeltLine's ever-evolving, and connective, nature.



2013-2015

Between 2013 and 2015, *Art on the Atlanta BeltLine* experienced rapid growth, with hundreds of new installations. The Lantern Parade swelled to more than 70,000 attendees, all with bright, colorful handmade lanterns.



2016-2018

These three years of *Art on the Atlanta BeltLine* featured immense transformation and evolution. The program's mission was codified in policy for the first time, and new partnerships and collaborations expanded the scope and reach of the exhibition.



TODAY & TOMORROW

Today, *Art on the Atlanta BeltLine* boasts dozens of sculptures, both temporary and continuing, as well as festivals, performances, and family-friendly events. The future of *Art on the Atlanta BeltLine* needs your participation to continue as the largest temporary outdoor art exhibition in the south!

PROGRAMS

More sculptures, murals, performances, and immersive experiences on the ever-evolving Atlanta BeltLine. As the largest outdoor public art exhibition in the south, there is something for everyone to enjoy. A full list of artists and works is at: art.beltline.org



BeltLine Walls, Volume 2

BeltLine Walls is the mural component of the exhibition. Muralists from Atlanta and beyond painted walls side-by-side alongside former railroad tracks on the Northeast (interim) Trail by Mason Fine Arts. See map inset. The 2019–2020 exhibition season kicked off with our mural festival, beginning July 21st. The festival culminated with a community opening and celebration on August 4th. Headlining was Serenbe Playhouse with selections from *Hair!* Families were invited to join the fun participating in a paint-by-number mural by ARTlanta Gallery.



BeltLine Flow

BeltLine Flow is the performance component of the 2019–2020 exhibition, comprised of pop-up style events, immersive interactions, and activations that celebrate the corridor and parks in a variety of locations.

Please see art.beltline.org/events for the full schedule.



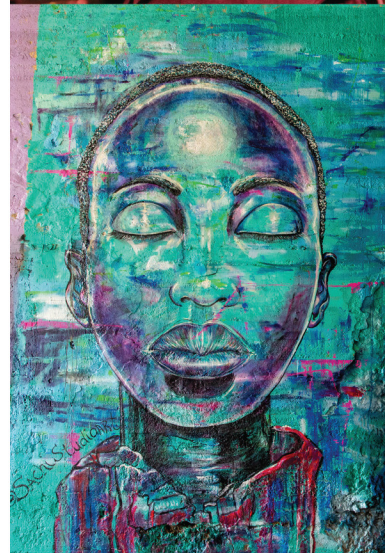
A City for All

The sculpture component of the exhibition, themed *A City for All*, is on display from August 2019 through June 2020. Artists were asked to consider the theme in their works.



BeltLine After Dark x Music in the Park

A free, weekend-long festival on October 18th and 19th, 2019 centered around the Westside Trail. *Music in the Park* will take over Gordon White Park; the historic Ashview Heights space will host dance, performance, theater, and a little magic on the Avant Garde Stage; and pop-up performances will take place along the trail. All locations are walkable to one another. Full schedule can be found at: art.beltline.org/events



Continuing Collection

Temporary works of art that have carried over from previous *Art on the Atlanta BeltLine* exhibitions. These include murals and sculptures that have a lifespan that can survive an outdoor environment.



Foundational Collection

Permanent and rotating sculptures from philanthropic funding sources that remain year-round. These pieces are often monumental in size, and reflect the character and history of the Atlanta BeltLine as a former railroad corridor.

SPECIAL PROJECTS

Special projects include pop-up events, festivals, solo exhibitions, and works or projects that activate the Atlanta BeltLine trails and parks.

This year's artists include:

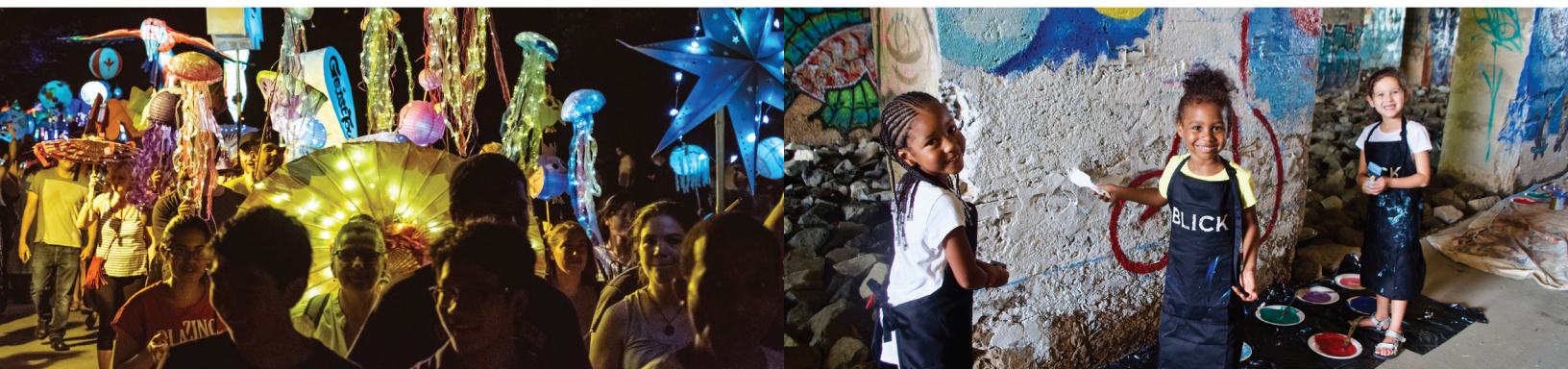
- Atlanta BeltLine Lantern Parade created and curated by Chantelle Rytter and the Krewe of the Grateful Gluttons
- Arbitrary Living x #ChopItUpATL (Quianah Upton)
- TILA Studios x Soap Goods Creative
- The Atlanta Opera
- Mausiki Scales and the Common Ground Collective

FINDING YOUR WAY

A PATH AROUND THE CITY'S LINEAR ART GALLERY.

Find out where art lives on the Eastside and Westside Trails of the Atlanta BeltLine, and stop for a photo with your favorite installation.

Tag: [#beltlineart](https://twitter.com/beltlineart)



RESIDENCY PROGRAMS

Art on the Atlanta BeltLine is expanding to include a public Artist in Residence Program. Visit art.beltline.org/events for related calendar happenings. Our inaugural Resident selection includes:

Benae Beamon, Scholar in Residence: Beamon will produce a body of work and peer-reviewed academic white paper, accompanied by a public presentation of her research findings.

Dr. Fahamu Pecou, Artist in Residence: Dr. Pecou will showcase new original work to be displayed on the Atlanta BeltLine, accompanied by an artist talk and Q&A.

Courtney Brooks, Curator in Residence: Brooks will create a public art exhibition of her own design and medium to be temporarily displayed on the Atlanta BeltLine, accompanied by a curator talk and Q&A sessions.

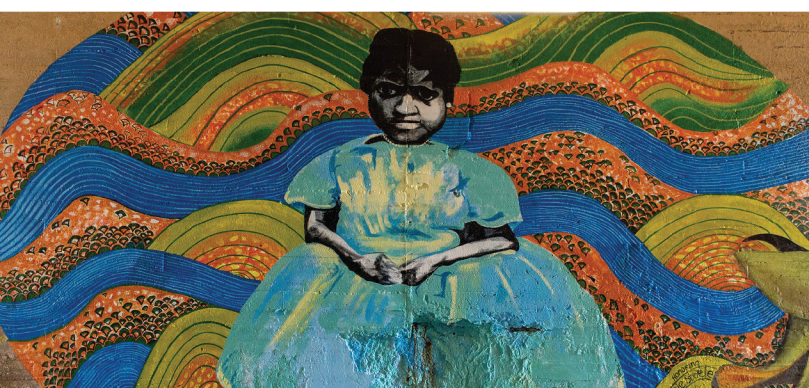
MAP LEGEND

We encourage our users to find alternative means of arriving at the corridor, but on-street parking is available in most areas.

2019/2020 EXHIBITION

- *A City for All* (Sculptures)
- *BeltLine Walls, Volume 2* (Murals)
- Event + Performance Locations
- Continuing Collection
- Foundational Collection
- Additional Public Art

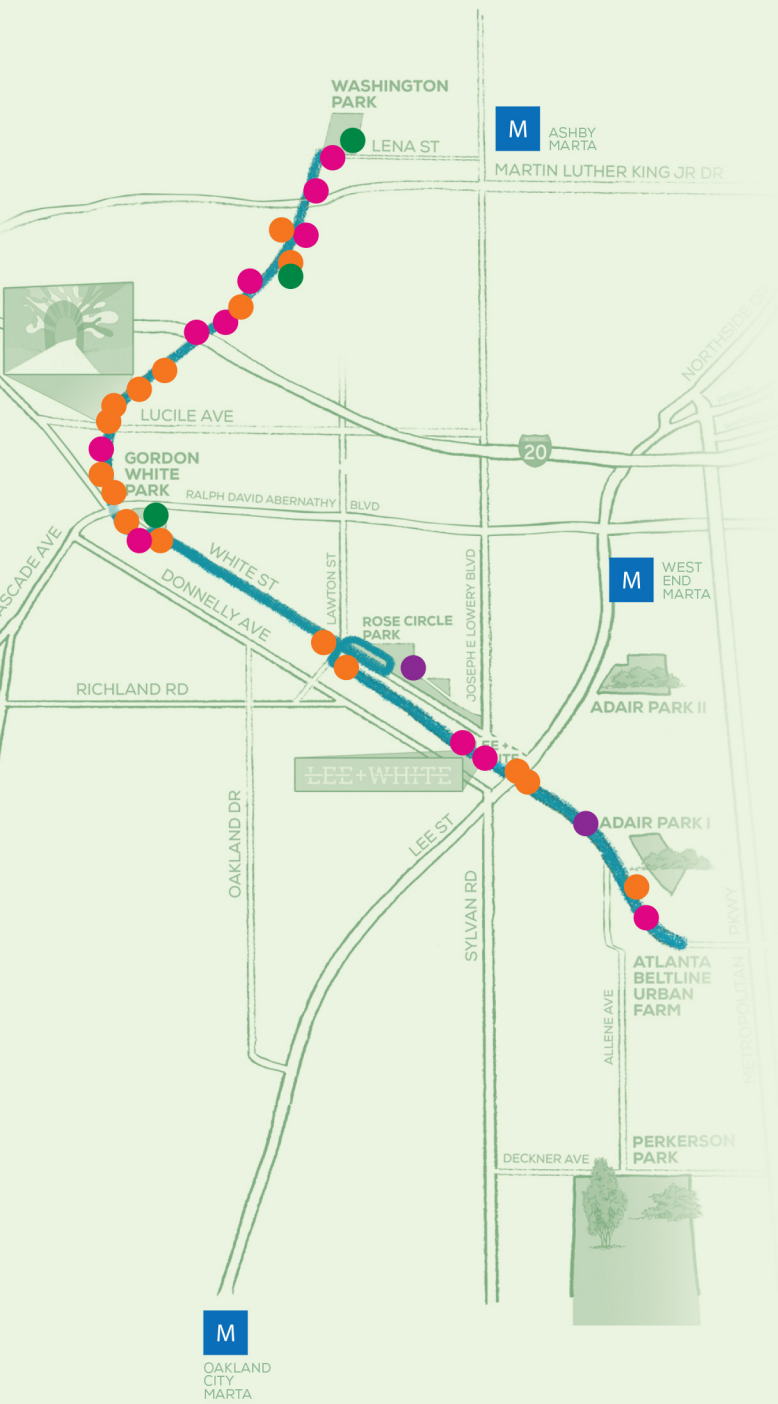
- Open Paved Trail
- Interim Trails
- M MARTA Stations
- P Parking



100 Peachtree Street NW
Suite 2300
Atlanta, GA 30303
404.477.3003

- art.beltline.org
- facebook.com/atlantabeltline
- [@atlantabeltline](https://twitter.com/atlantabeltline)
- [@atlantabeltlineart](https://instagram.com/atlantabeltlineart)

WESTSIDE TRAIL



EASTSIDE TRAIL

